

HO523 WIFI INSTALLATION

Follow the steps below to install the WS103 WiFi/Bluetooth module on the HO523.

Step 1

Remove the screws from each side of the HO523 (four screws total).



Step 2

Using your thumbs, slide the top casing towards the back. Then, remove it completely.



Step 3

Insert the WS103 module into the M.2 connector at an angle of approximately 20 degrees.



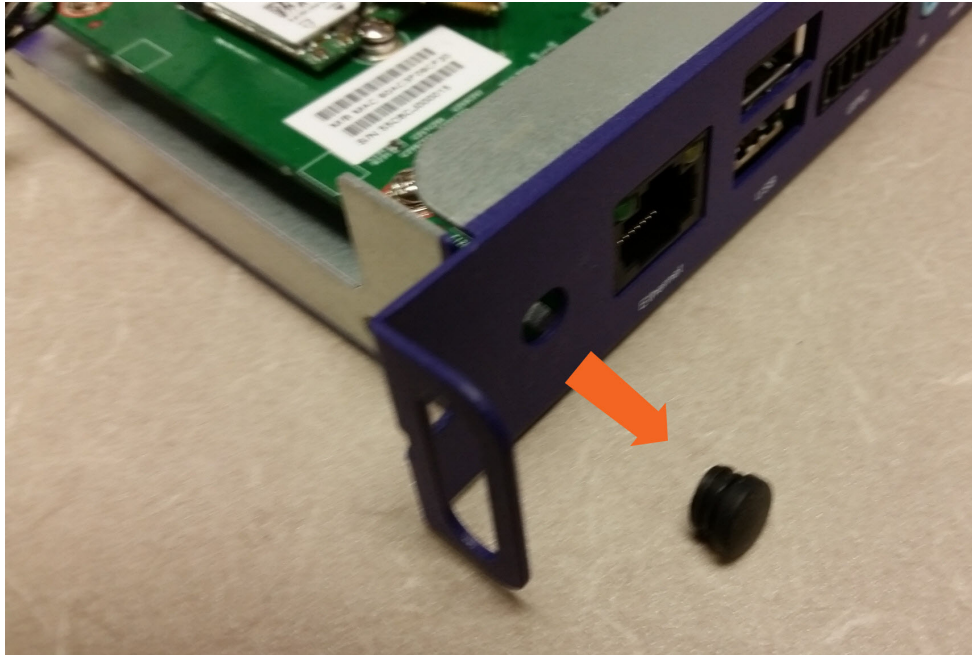
Step 4

Secure the WS103 using the screw included with the module.



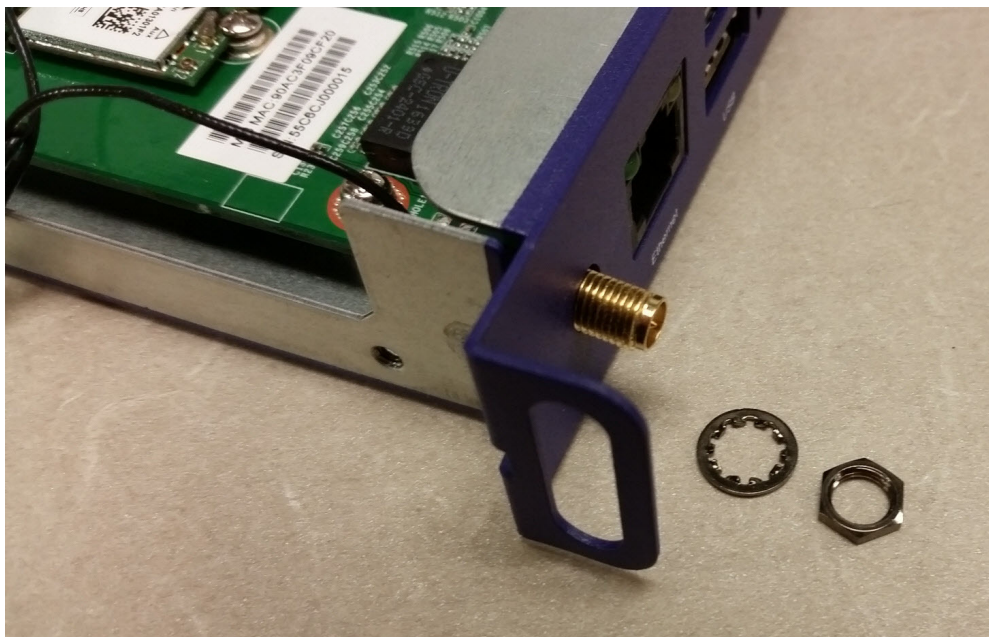
Step 5

Remove the rubber cap from the antenna port near the WS103 module (i.e. the port on the left side of the front panel).



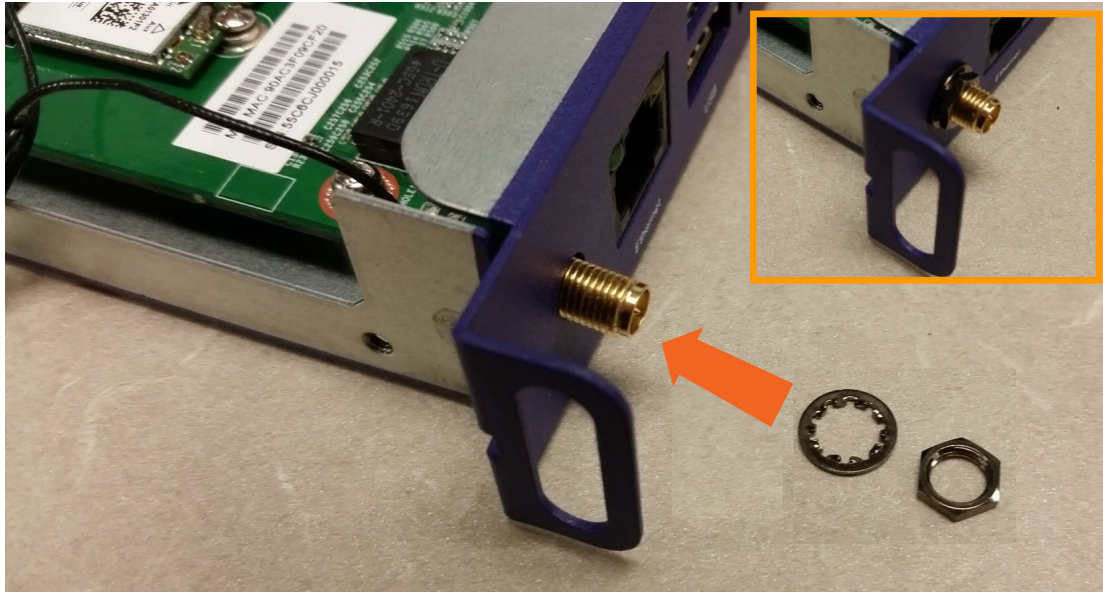
Step 6

Insert the threaded antenna connector into the antenna port.



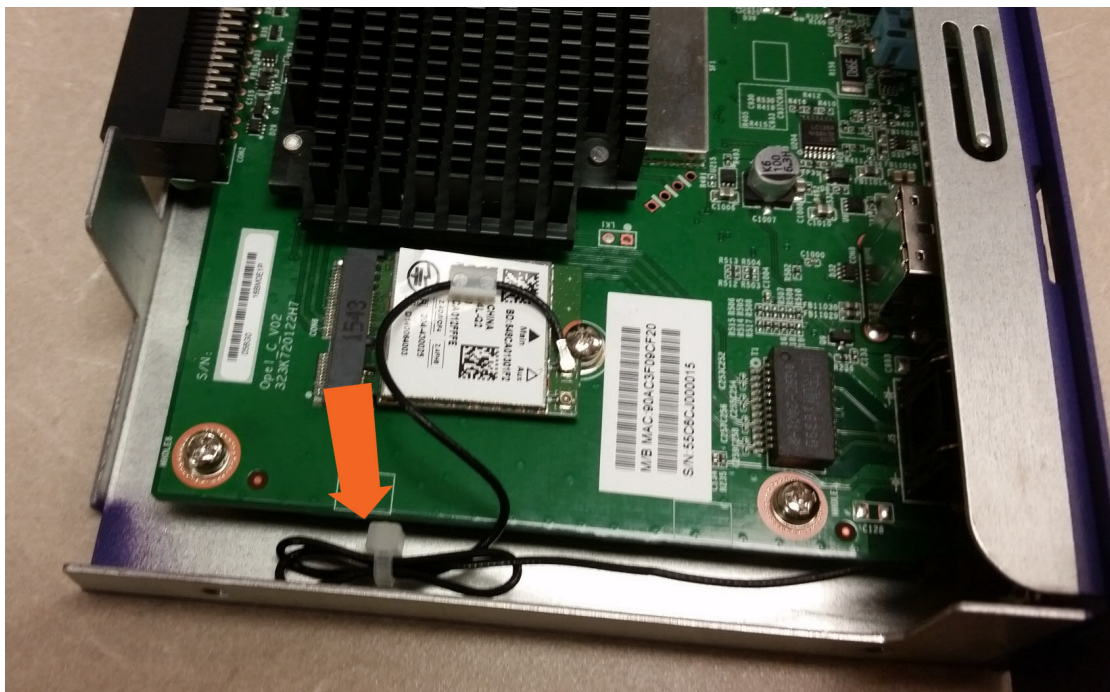
Step 7

Secure the threaded antenna connector using the washer and nut included with the module.



Step 8

Tuck the excess antenna cable into the space between the circuit board and the bottom casing.



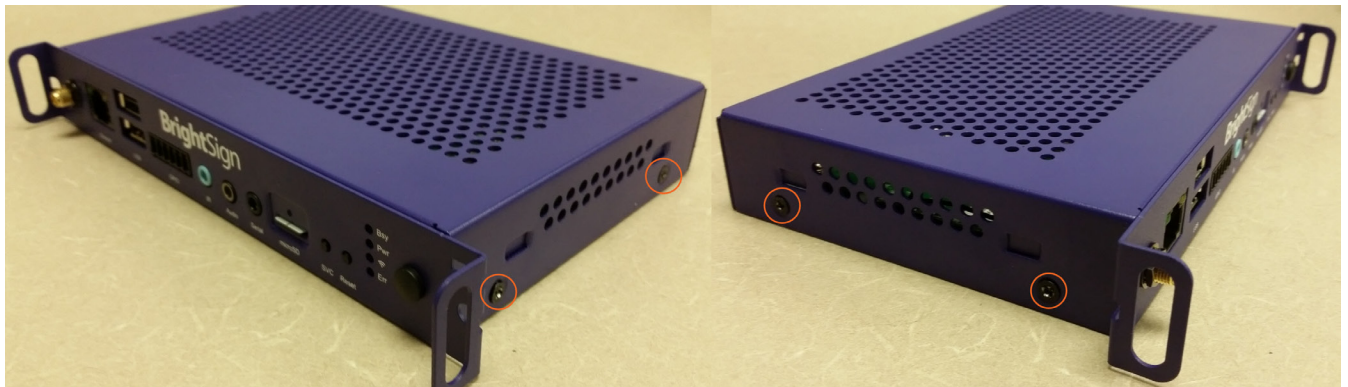
Step 9

Replace the top casing on the player, making sure it locks fully into place.



Step 10

Reinsert and secure the screws on each side of the HO523.



Step 11

Attach the antenna to the threaded antenna connector.

